

MEDIA CONTACT

Sarah Keeth

Regional Prevention Coordinator

Skeeth@red-rock.com

405-761-1146

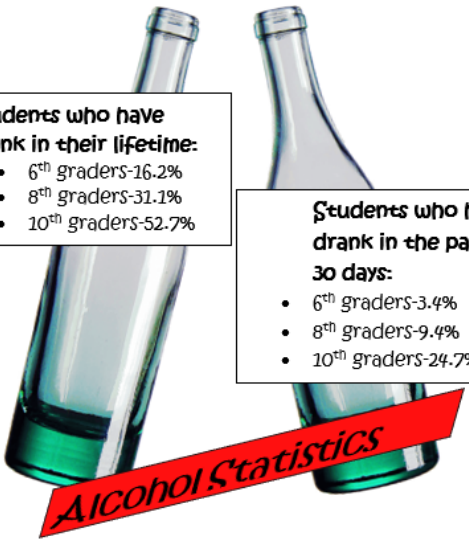
Oklahoma Prevention Needs Assessment

What is it, Who does it effect, Do I want to see the results?

Getting to know and understand all the complex details of your high schoolers life and their thoughts is nothing short of complicated. The Oklahoma Preventions Needs Assessment Survey is here to help and Red Rock RPC wants to share previous years of data with you and how you can use it to understand the appropriate actions to take as individuals and as a community.

The Oklahoma Prevention Needs Assessment (O.P.N.A survey is designed to assess students' involvement in a specific set of problem behaviors, as well as their exposure to a set of scientifically validated risk and protective factors. The risk and protective factors have been shown to influence the likelihood of academic success, positive mental health, school dropout, substance abuse, violence, and delinquency among youth.

Coordination and administration of the OPNA survey was a collaborative effort among ODMHSAS, Oklahoma State Department of Education (OSDE), Regional Prevention Coordinators (RPC) and participating schools.



**Students who have
drank in their lifetime:**

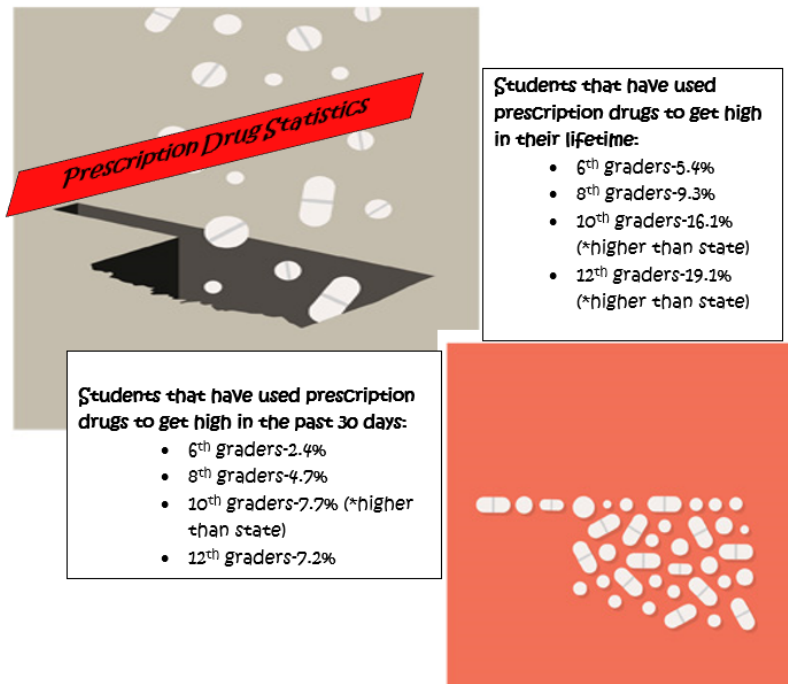
- 6th graders-16.2%
- 8th graders-31.1%
- 10th graders-52.7%

**Students who have
drank in the past
30 days:**

- 6th graders-3.4%
- 8th graders-9.4%
- 10th graders-24.7%

Alcohol Sources: How students are obtaining alcohol

- 6th graders-25.2% from someone over 21
 - 43.5% from home with parents' permission
- 8th graders-30% from home without parents' permission
 - 32.7% from someone over 21
- 10th graders-47.2% from someone over 21 (*higher than state)
 - 28.6% from someone under 21 (*higher than state)
- 12th graders-58.1% from someone over 21
 - 23.2% from someone under 21
 - 23.2% from home with parents' permission (*higher than state)



Prescription Drug Sources: How students are obtaining prescription drugs in order to get high

- 6th graders -25.9% from friends (*higher than state)
-33.3% from doctor/pharmacy
- 8th graders -39.7% from friends
-27% from home (*higher than state)
- 10th graders -55.6% from friends (*higher than state)
-17.3% from home
- 12th graders -54.9% from friends
-14.3% at a party

The first step to making a difference, is figuring out where the problems are. We hope that the highlighted data statistics above encourage you to take action to support school administrations in conducting surveys across Grady County.

Red Rock Regional Prevention Coordinator- Region 13 is funded by the Oklahoma Department of Mental Health and Substance Abuse Services